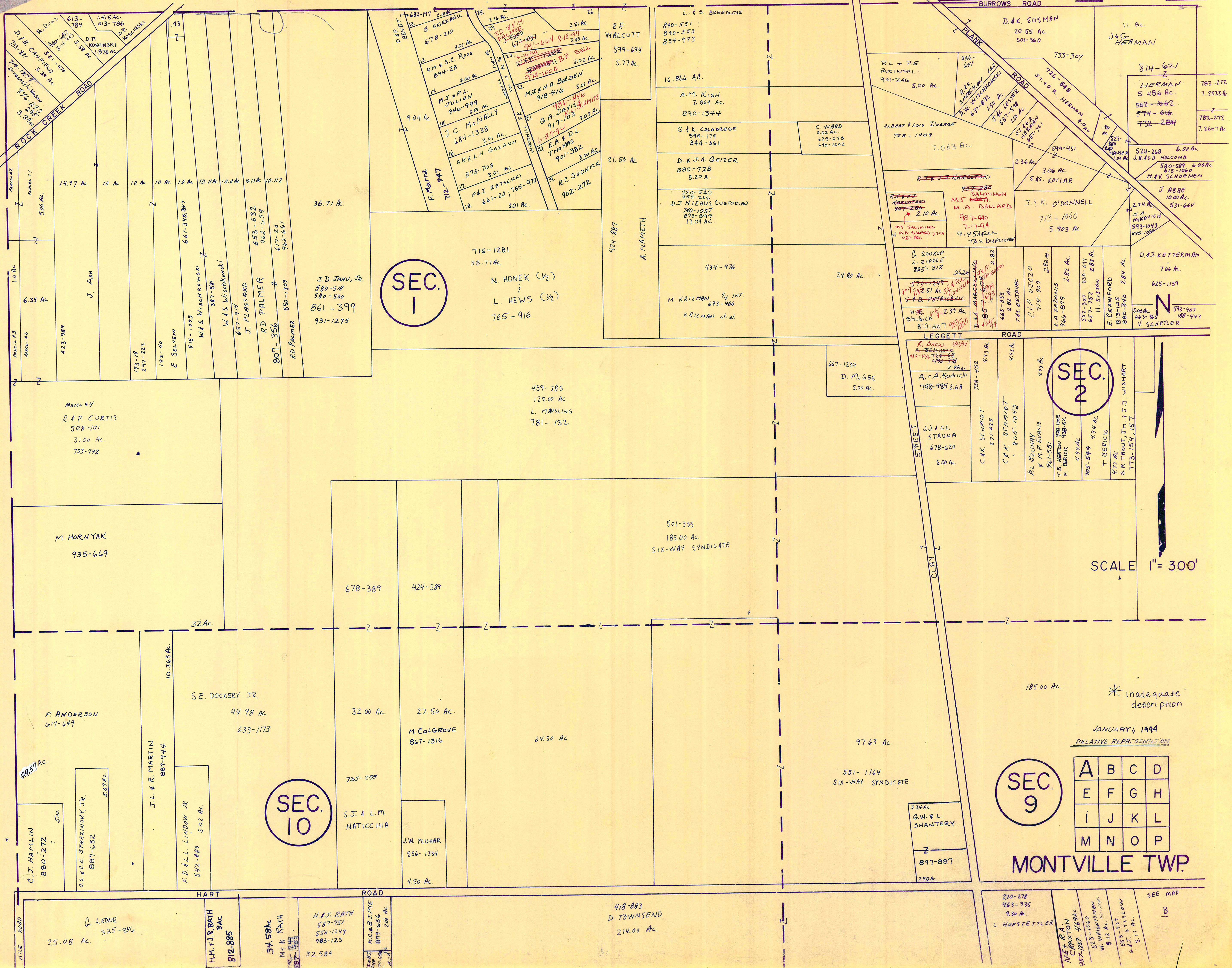


THOMPSON TOWNSHIP

HAMBDEN TOWNSHIP



SEC. 1

SEC. 2

SEC. 10

SEC. 9

A	B	C	D
E	F	G	H
I	J	K	L
M	N	O	P

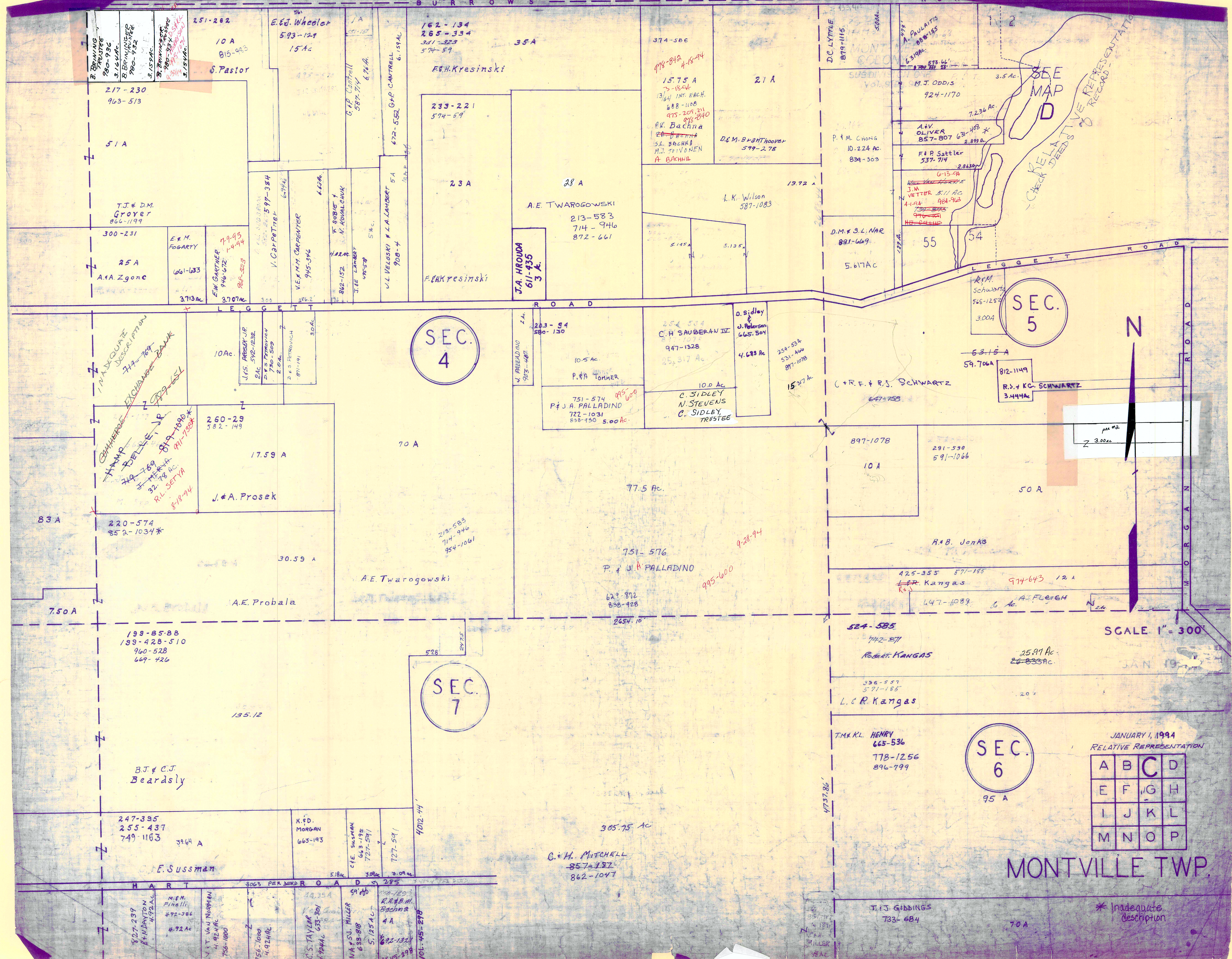
MONTVILLE TWP.

JANUARY, 1994
RELATIVE REPRESENTATION

* inadequate description

SCALE 1" = 300'

SEE MAP
1B



SEC. 4

SEC. 5

SEC. 7

SEC. 6

JANUARY 1, 1994
RELATIVE REPRESENTATION

A	B	C	D
E	F	G	H
I	J	K	L
M	N	O	P

MONTVILLE TWP.

* Inadequate description

IN ADEQUATE DESCRIPTION
74-769
EXCHANGE BANK
74-769
HAMP DELISE, JR
32-78 AC
RI. SETVA
818-994

SEE MAP
CHECK RELATIVE REPRESENTATION RECORD

SCALE 1" = 300'

JAN 1994

T.M. KL. HENRY
665-536
778-1256
896-799

C. H. MITCHELL
857-787
862-1047

B.J. & C.J. Beardsly

E. Sussman

199-85-88
199-428-510
960-528
669-726

220-574
852-1034*

260-29
582-149

J. & S. ARBESCH, JR.
245-512-1232
245-720-509
204-
245-720-509

E. & M. FOGARTY
661-633
3.713 AC

217-230
963-513

251-262
10 A
815-043
S. Pastor

162-134
265-334
341-323
574-59

233-221
574-59

23 A

J.A. HROUDA
611-435
3 A.

203-59
580-130

751-574
722-1031
898-930 5.00 AC.

10.5 AC.
P. & A. Tomner

629-872
898-928

528

305.75 AC

254-534
C.H. SAUBERAN III
947-1328
25,317 AC.

10.0 AC.
C. SIDLEY
N. STEVENS
C. SIDLEY, TRUSTEE

77.5 AC.

751-576
P. & J. A. PALLADINO

2654.10

528

305.75 AC

4.689 AC.
D. Sidley & J. Petersen
665-504

10.0 AC.
C. SIDLEY
N. STEVENS
C. SIDLEY, TRUSTEE

77.5 AC.

751-576
P. & J. A. PALLADINO

2654.10

528

305.75 AC

4.689 AC.
D. Sidley & J. Petersen
665-504

10.0 AC.
C. SIDLEY
N. STEVENS
C. SIDLEY, TRUSTEE

77.5 AC.

751-576
P. & J. A. PALLADINO

2654.10

528

305.75 AC

4.689 AC.
D. Sidley & J. Petersen
665-504

10.0 AC.
C. SIDLEY
N. STEVENS
C. SIDLEY, TRUSTEE

77.5 AC.

751-576
P. & J. A. PALLADINO

2654.10

528

305.75 AC

4.689 AC.
D. Sidley & J. Petersen
665-504

10.0 AC.
C. SIDLEY
N. STEVENS
C. SIDLEY, TRUSTEE

77.5 AC.

751-576
P. & J. A. PALLADINO

2654.10

528

305.75 AC

4.689 AC.
D. Sidley & J. Petersen
665-504

10.0 AC.
C. SIDLEY
N. STEVENS
C. SIDLEY, TRUSTEE

77.5 AC.

751-576
P. & J. A. PALLADINO

2654.10

528

305.75 AC

4.689 AC.
D. Sidley & J. Petersen
665-504

10.0 AC.
C. SIDLEY
N. STEVENS
C. SIDLEY, TRUSTEE

77.5 AC.

751-576
P. & J. A. PALLADINO

2654.10

528

305.75 AC

4.689 AC.
D. Sidley & J. Petersen
665-504

10.0 AC.
C. SIDLEY
N. STEVENS
C. SIDLEY, TRUSTEE

77.5 AC.

751-576
P. & J. A. PALLADINO

2654.10

528

305.75 AC

4.689 AC.
D. Sidley & J. Petersen
665-504

10.0 AC.
C. SIDLEY
N. STEVENS
C. SIDLEY, TRUSTEE

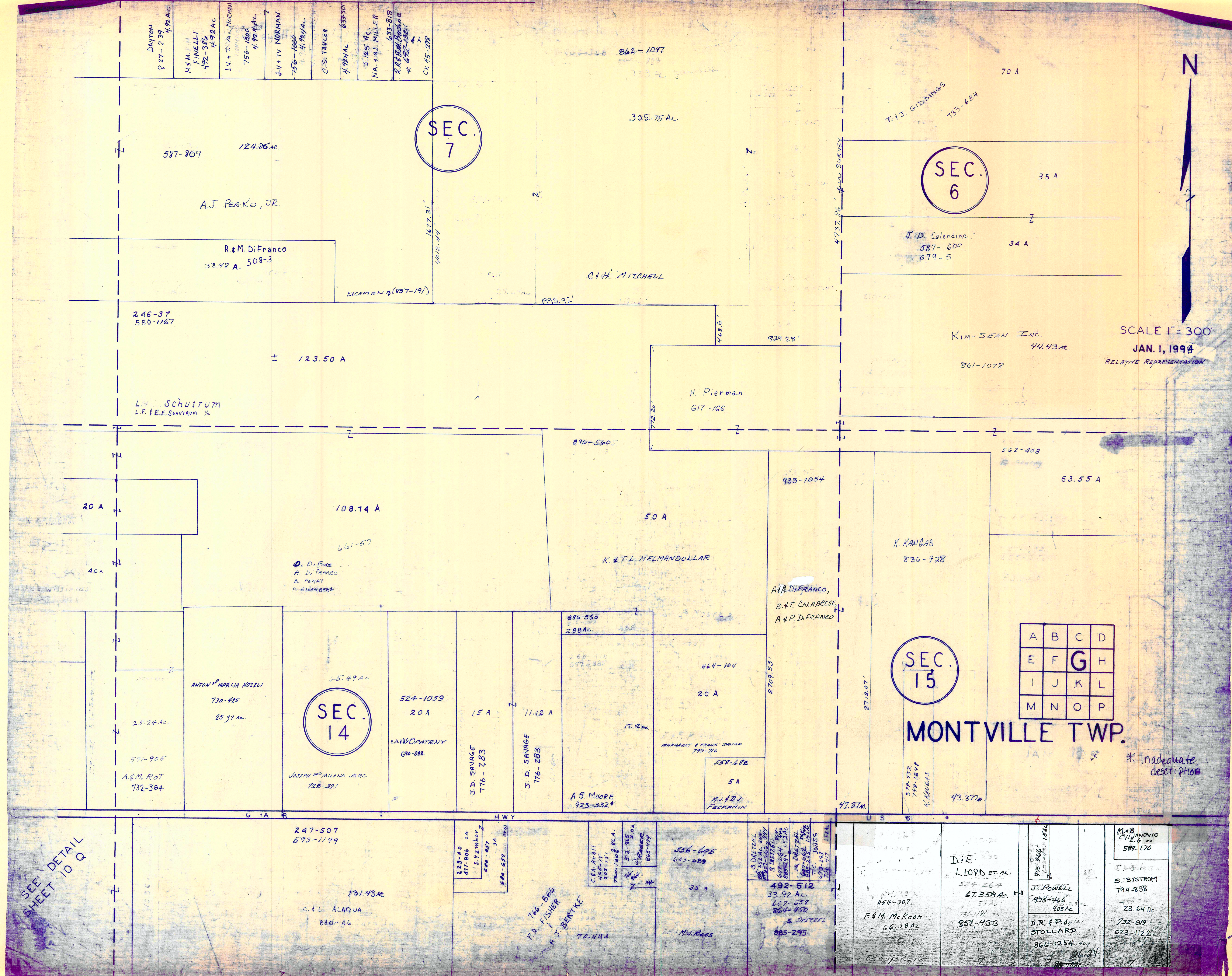
77.5 AC.

751-576
P. & J. A. PALLADINO

2654.10

528

305.75 AC



SEC. 7

SEC. 6

SEC. 14

SEC. 15

A	B	C	D
E	F	G	H
I	J	K	L
M	N	O	P

MONTVILLE TWP.

* inadequate description



SCALE 1" = 300'
JAN. 1, 1994
RELATIVE REPRESENTATION

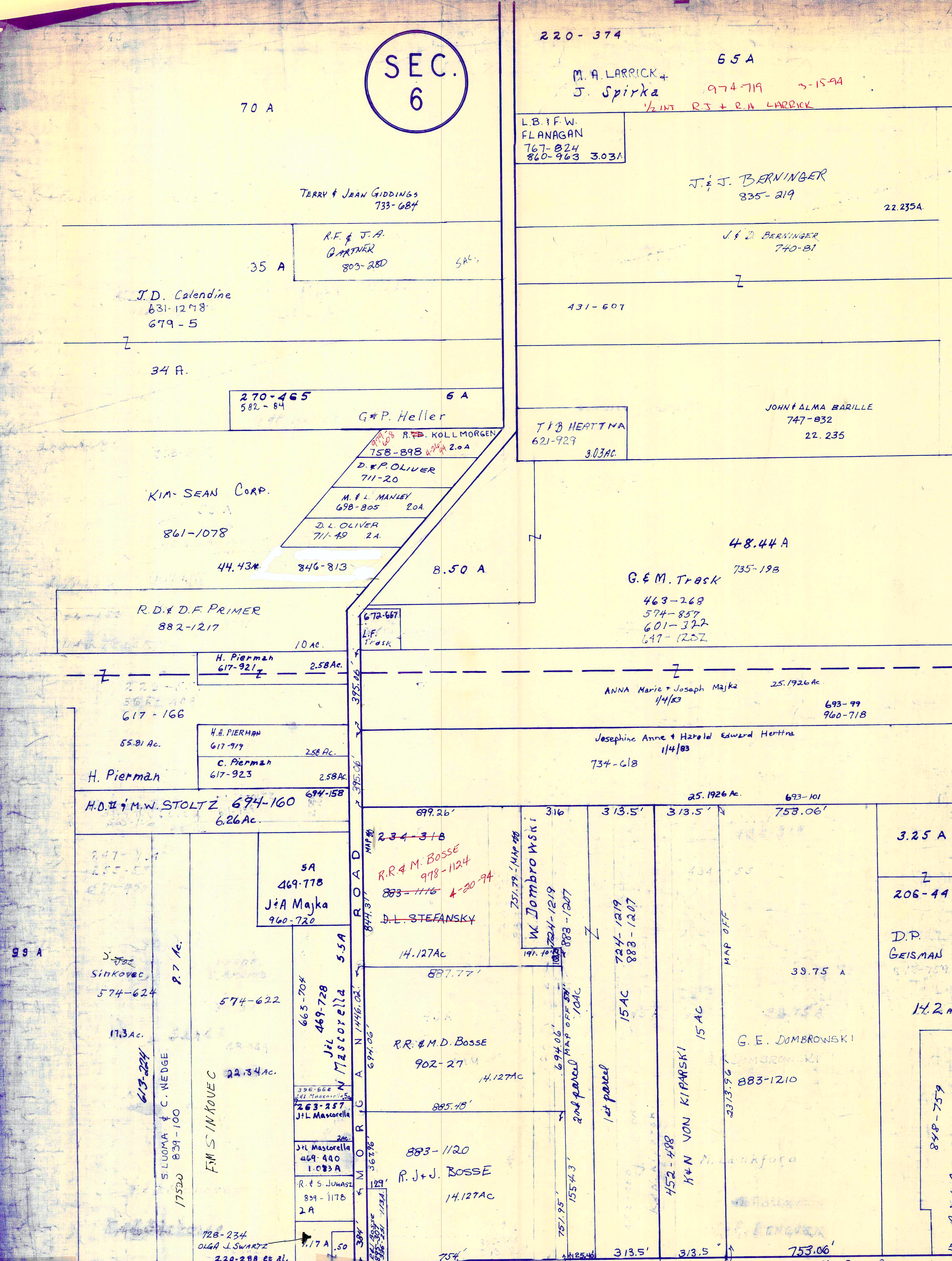
SEE DETAIL SHEET 10 Q

DAYTON 8 27-2 37 4.12 AC
M.S.M. FINELLI 492-386 4.92 AC
J.V. + T.V. NORCHAM 756-1000 4.92 AC
J.V. + T.V. NORCHAM 756-1000 4.92 AC
C.S. TAYLOR 494 AC 633307
S. 125 AC NA. 1.93. MILLER 633-818
R. & M. DiFranco * 682-1221
C.K. 45-289

862-1097
305.75 AC
587-809 124.86 AC
A.J. PERKO, JR.
R. & M. DiFranco 33.48 A. 508-3
EXCEPTION 8 (857-191)
246-37 580-1167
123.50 A
L. Schutrum L.F. & E.E. SCHUTRUM 1/4
929.28'
468.6'
H. Pierman 617-166
KIM-SEAN INC. 44.43 AC 861-1078
70 A
T.J. GIDDINGS 733-684
35 A
J.D. Calendine 587-600 34 A 679-5
929.28'
772.20'
933-1054
63.55 A
K. KANGAS 836-928
K. & T.L. HELMANDOLLAR
A. & P. DiFRANCO, B. & T. CALABRESE, A. & P. DiFRANCO
20 A
40 A
108.74 A
661-57
D. Di Fiore, P. Di Franco, B. PERRY, P. EISENBERG
ANTON & MARILIA NOZELI 730-425 25.37 AC
25.24 AC
571-905
A. & M. ROT 732-384
524-1059 20 A
15 A
11.12 A
896-566 288 AC
464-104 20 A
17.12 AC
MARGARET & FRANK DZAK 743-716
558-682 5 A
M. & J. FECCANIN
A.S. MOORE 923-332+
728-391
JOSEPH & MILENA JARC
E.A. & OPATENY 690-888
J.D. SAVAGE 776-283
J.D. SAVAGE 776-283
571-905
A. & M. ROT 732-384
247-507 593-1199
131.43 AC
C. & L. ALAQUA 840-46
766-866
P.A. FISHER
A.J. BERTKE 70.44 A
556-696 643-689
35 A
492-512 33.92 AC
607-658
864-450
S. DREITZEL
885-295
F. & M. McKeon 66.38 AC
D. & E. LLOYD ET. AL. 524-262 67.358 AC
695-446
854-4393
F. & M. McKeon 66.38 AC
J. POWELL 975-466 405 AC
D.R. & P. J. STOLLARD 866-1254
786-1114
M. & B. ANONIC CIVIL 582-170
S. BYSTROM 794-838
23.64 AC
732-819
623-1122

SEC. 6

A S H T A B U L A C O U N T Y



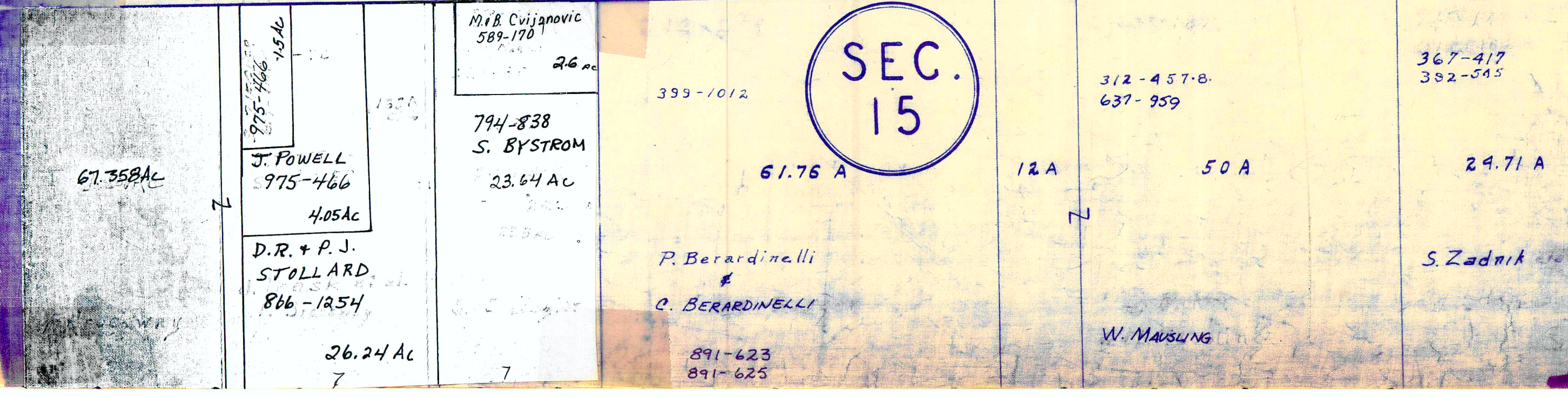
SCALE 1" = 300'
 JAN

* Inadequate description
 JANUARY 1, 1994
 RELATIVE REPRESENTATION

A	B	C	D
E	F	G	H
I	J	K	L
M	N	O	P

MONTVILLE TWP

SEC. 15



H A M B D E N T O W N S H I P

665-111 925-122
 312-255
 K. Majewski
 609-335 113A

154-369
 11894
 16197
 39.23 AC.
 M.D. & D.B.
 BRUMBAUGH
 1250-926
 250 AC.

316-348
 891-617
 891-620
 P.C. Berardinelli, TRUSTEES
 77-126

P.M. JONES
 848-426
 11.59
 1997
 153
 4 AC
 14494
 H.41 AC.

J.P. Lorrie
 815-331

K.P. & A.B. HELMERICK
 2.413 AC.
 758-75

A.M. WUNDERLICH 2.41 AC.
 657-957 94-27

845-199 2.4149 AC.

523-330 5 AC.
 R. & L. SIPPOLA

L.S. Howard
 589-1100
 1.5 AC.

523-1032 1 AC.
 W.M. Morgan
 843-625
 821-989 2 AC.
 W.M. Morgan

454-768
 R.S. Rosati

7.813 AC.

A. & A. FUCHS
 841-1106
 26.56 AC.

148-83A
 142.96 AC.

B. MARSIC
 848-115
 3.17 AC.

844-612
 J.H. MARSIC

J.H. & L.A. MARSIC
 881-796 * 3.299

728-160
 825-771
 B. Marsic

721-1263 928-239
 M. MASEK

41.28 A

R.J. FRITTEL
 633-1085
 964-826

220-614

72.70 A

A. & J. Miller

845-199
 22.77 AC.

524-671

107.53 AC.
 L. & F. LUTHLE
 734-356

SEC 20

232-300
 7.813 AC.

A. & A. FUCHS
 841-1106
 26.56 AC.

431-321 2

148-83A
 142.96 AC.

B. Marsic

728-160
 825-771

41.28 A

25 A

25 A

25 A

43 AC

SEC 11

A. GINCAS

10 A

10 A

1100 AC.

49 AC

370-511
 36 A

Case Inst. Appl'd. Sc.

35.75 A

37 A

R. Arthur, Jr.

841-1106 7.12 A

523-718 19 A

R.A. & S.E. ROSATI

424-131 21.75 A

20.16 A

3

41.28 A

R.J. FRITTEL
 633-1085
 964-826

L.B. LIMITED
 parcel # 5
 192.5 AC.

224-248
 832-570

746-46
 751-265
 846-1065

52 A

L. McBEARY
 E. TURNER
 V. HOPES

PARCEL #1

928.62'

1941.72'

A. GINCAS
 751-265
 846-1065

49 AC

36 A

35.75 A

37 A

R. Arthur, Jr.

841-1106 7.12 A

523-718 19 A

R.A. & S.E. ROSATI

424-131 21.75 A

20.16 A

3

L.B. LIMITED

27 A

124-502

426-120

12.794 AC.

G. EYRING
 629-390
 12.544 AC.

J. Comella

3/2-34

4 A

731-655
 A.M. Mast

A.M. Mast 2 A
 763-491

R.A. Licursi
 589-1146

13.466 AC.

550-242
 15 AC.

SEC 12

E.J. & M.M. KNAPIK

20.19 AC. 45

696-1088
 J.M. POLINSKI

10.074 AC.
 SUSAN E. GILLES
 744-60

B. & D. MARKIEWICZ
 859-233

10 AC.

692-1234
 10-109 AC.

SE. & A.V. LAROSA
 769-666
 769-664

10 AC.

20.00 AC.

D.Q. & D.C. WARDELL

930-1014

RONALD W. & MYRNA E. KETCHUM
 749-86

20 A

SEC 19

50.22 A

SCALE 1" = 300'

272-266

10.05 A

Case School App'l. Sc.

124-129
 Case Institute of Technology

67.21 A

3

721-1263 928-239
 M. MASEK

30.916 * Inadequate description

888-9

426-120

12.794 AC.

G. EYRING
 629-390
 12.544 AC.

J. Comella

3/2-34

4 A

731-655
 A.M. Mast

A.M. Mast 2 A
 763-491

R.A. Licursi
 589-1146

13.466 AC.

550-242
 15 AC.

SEC 12

E.J. & M.M. KNAPIK

20.19 AC. 45

696-1088
 J.M. POLINSKI

10.074 AC.
 SUSAN E. GILLES
 744-60

B. & D. MARKIEWICZ
 859-233

10 AC.

692-1234
 10-109 AC.

SE. & A.V. LAROSA
 769-666
 769-664

10 AC.

20.00 AC.

D.Q. & D.C. WARDELL

930-1014

RONALD W. & MYRNA E. KETCHUM
 749-86

20 A

SEC 19

50.22 A

SCALE 1" = 300'

272-266

10.05 A

Case School App'l. Sc.

124-129
 Case Institute of Technology

67.21 A

3

721-1263 928-239
 M. MASEK

30.916 * Inadequate description

888-9

MONTVILLE TWP.

JAN 6, 1994

RELATIVE REPRESENTATION

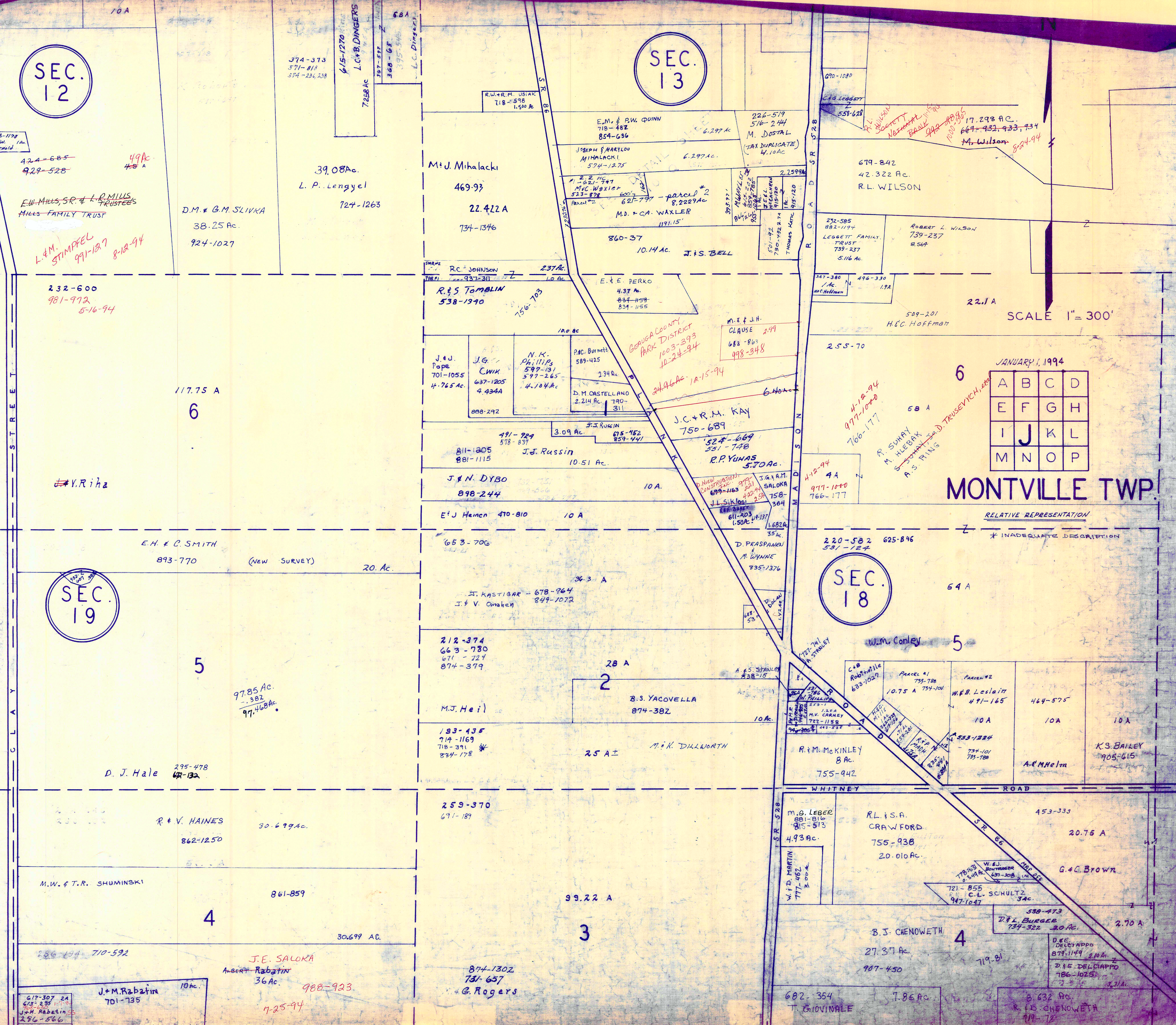
A	B	C	D
E	F	G	H
I	J	K	L
M	N	O	P

* Inadequate description

SEC. 12

SEC. 13

SEC. 18



SCALE 1" = 300'

JANUARY 1, 1994

A	B	C	D
E	F	G	H
I	J	K	L
M	N	O	P

MONTVILLE TWP

RELATIVE REPRESENTATION
* INADEQUATE DESCRIPTION

578-1178
J. H. ...
A. ...

424-685
929-528
49A
E.W. MILLS, SR. & L.R. MILLS
TRUSTEES
MILLS FAMILY TRUST

L.M. STIMPKEL
991-137
8-12-94

232-600
981-972
5-16-94

V. Riha

SEC. 19

D. J. Hale
295-478
49-132

R. V. HAINES
862-1250
30.699 Ac.

M.W. & T.R. SHUMINSKI
861-859

286-194 710-592

617-307 24
613-235 14
J.M. Rabatin
286-566

J.M. Rabatin
701-735
10 Ac.

J.E. SALOKA
A. BERT
Rabatin
36 Ac.
988-923
7-25-94

874-1302
731-657
G. Rogers

39.08 Ac.
L. P. Lengyel
724-1263

D.M. & G.M. SLIVKA
38.25 Ac.
924-1027

117.75 A
6

E.H. & C. SMITH
893-770 (NEW SURVEY)
20. Ac.

97.85 Ac.
-382
97.468 Ac.
5

30.699 AC.

861-859

30.699 Ac.

M. J. Mihalacki
469.93
22.422 A
734-1346

R. S. Tomblin
538-1390
736-703

J. & J. Pope
701-1055
4.765 Ac.

J. F. Russin
881-1115
10.51 Ac.

J. & N. DYBO
898-244
10 A.

E. J. Heinen
470-810
10 A.

J. KASTIGAR - 678-964
J. V. Omahen 849-1072
36.3 A

212-374
663-730
671-724
874-379
28 A

M. J. Heil
183-135
714-1169
718-371
834-178
25 A ±

259-370
691-189
28 A

B. S. YACOVELLA
874-382
10 A.

M. K. DILLWORTH
25 A ±

99.22 A
3

874-1302
731-657
G. Rogers

E.M. & B.W. QUINN
718-482
854-636
6.297 Ac.

JOSEPH & MARY LOU
MIHALACKI
574-1275
6.297 Ac.

M. D. FCA. WAXLER
1191.15'
860-37
10.14 Ac.

E. & E. PERKO
4.37 Ac.
834-1159
834-1155

J. C. & R. M. KAY
750-689
528-669
351-748
10 A.

J. & A. M. SALOKA
758-364
10 A.

J. J. SALOKA
61-103
1.50 Ac.

J. J. ROKIN
915-452
859-441
3.09 Ac.

J. & N. DYBO
898-244
10 A.

E. J. Heinen
470-810
10 A.

J. KASTIGAR - 678-964
J. V. Omahen 849-1072
36.3 A

212-374
663-730
671-724
874-379
28 A

M. J. Heil
183-135
714-1169
718-371
834-178
25 A ±

B. S. YACOVELLA
874-382
10 A.

M. K. DILLWORTH
25 A ±

99.22 A
3

874-1302
731-657
G. Rogers

226-519
570-244
M. DOSTAL
(TAX DUPLICATE)
4.10 Ac.

M. D. FCA. WAXLER
1191.15'
860-37
10.14 Ac.

J. & S. BELL
10.14 Ac.

E. & E. PERKO
4.37 Ac.
834-1159
834-1155

J. C. & R. M. KAY
750-689
528-669
351-748
10 A.

J. & A. M. SALOKA
758-364
10 A.

J. J. SALOKA
61-103
1.50 Ac.

J. J. ROKIN
915-452
859-441
3.09 Ac.

J. & N. DYBO
898-244
10 A.

E. J. Heinen
470-810
10 A.

J. KASTIGAR - 678-964
J. V. Omahen 849-1072
36.3 A

212-374
663-730
671-724
874-379
28 A

M. J. Heil
183-135
714-1169
718-371
834-178
25 A ±

B. S. YACOVELLA
874-382
10 A.

M. K. DILLWORTH
25 A ±

99.22 A
3

874-1302
731-657
G. Rogers

679-842
42.322 Ac.
R.L. WILSON

ROBERT L. WILSON
739-237
8.564

LEGGETT FAMILY
TRUST
739-237
5.116 Ac.

H.C. HOFFMANN
509-201
22.1 A

H.C. HOFFMANN
509-201
22.1 A

H.C. HOFFMANN
509-201
22.1 A

H.C. HOFFMANN
509-201
22.1 A

H.C. HOFFMANN
509-201
22.1 A

H.C. HOFFMANN
509-201
22.1 A

H.C. HOFFMANN
509-201
22.1 A

H.C. HOFFMANN
509-201
22.1 A

H.C. HOFFMANN
509-201
22.1 A

H.C. HOFFMANN
509-201
22.1 A

H.C. HOFFMANN
509-201
22.1 A

H.C. HOFFMANN
509-201
22.1 A

H.C. HOFFMANN
509-201
22.1 A

H.C. HOFFMANN
509-201
22.1 A

H.C. HOFFMANN
509-201
22.1 A

H.C. HOFFMANN
509-201
22.1 A

H.C. HOFFMANN
509-201
22.1 A

H.C. HOFFMANN
509-201
22.1 A

H.C. HOFFMANN
509-201
22.1 A

JANUARY 1, 1994

A	B	C	D
E	F	G	H
I	J	K	L
M	N	O	P

MONTVILLE TWP

RELATIVE REPRESENTATION
* INADEQUATE DESCRIPTION

SEC. 18

W.M. Conley 5

W.M. Conley 5

W.M. Conley 5

W.M. Conley 5

W.M. Conley 5

W.M. Conley 5

W.M. Conley 5

W.M. Conley 5

W.M. Conley 5

W.M. Conley 5

JANUARY 1, 1994

A	B	C	D
E	F	G	H
I	J	K	L
M	N	O	P

MONTVILLE TWP

RELATIVE REPRESENTATION
* INADEQUATE DESCRIPTION

SEC. 18

W.M. Conley 5

W.M. Conley 5

W.M. Conley 5

W.M. Conley 5

W.M. Conley 5

W.M. Conley 5

W.M. Conley 5

W.M. Conley 5

W.M. Conley 5

W.M. Conley 5

JANUARY 1, 1994

A	B	C	D
E	F	G	H
I	J	K	L
M	N	O	P

MONTVILLE TWP

RELATIVE REPRESENTATION
* INADEQUATE DESCRIPTION

SEC. 18

W.M. Conley 5

W.M. Conley 5

W.M. Conley 5

W.M. Conley 5

W.M. Conley 5

W.M. Conley 5

W.M. Conley 5

W.M. Conley 5

W.M. Conley 5

W.M. Conley 5

JANUARY 1, 1994

A	B	C	D
E	F	G	H
I	J	K	L
M	N	O	P

MONTVILLE TWP

RELATIVE REPRESENTATION
* INADEQUATE DESCRIPTION

SEC. 18

W.M. Conley 5

W.M. Conley 5

W.M. Conley 5

W.M. Conley 5

W.M. Conley 5

W.M. Conley 5

W.M. Conley 5

W.M. Conley 5

W.M. Conley 5

W.M. Conley 5

JANUARY 1, 1994

A	B	C	D
E	F	G	H
I	J	K	L
M	N	O	P

MONTVILLE TWP

RELATIVE REPRESENTATION
* INADEQUATE DESCRIPTION

SEC. 18

W.M. Conley 5

W.M. Conley 5

W.M. Conley 5

W.M. Conley 5

W.M. Conley 5

W.M. Conley 5

W.M. Conley 5

W.M. Conley 5

W.M. Conley 5

W.M. Conley 5

JANUARY 1, 1994

A	B	C	D
E	F	G	H
I	J	K	L
M	N	O	P

MONTVILLE TWP

RELATIVE REPRESENTATION
* INADEQUATE DESCRIPTION

SEC. 18

W.M. Conley 5

W.M. Conley 5

W.M. Conley 5

W.M. Conley 5

W.M. Conley 5

W.M. Conley 5

W.M. Conley 5

W.M. Conley 5

W.M. Conley 5

W.M. Conley 5

JANUARY 1, 1994

A	B	C	D
E	F	G	H
I	J	K	L
M	N	O	P

MONTVILLE TWP

RELATIVE REPRESENTATION
* INADEQUATE DESCRIPTION

SEC. 18

W.M. Conley 5

W.M. Conley 5

W.M. Conley 5

W.M. Conley 5

W.M. Conley 5

W.M. Conley 5

W.M. Conley 5

W.M. Conley 5

W.M. Conley 5

W.M. Conley 5

JANUARY 1, 1994

A	B	C	D
E	F	G	H
I	J	K	L
M	N	O	P

MONTVILLE TWP

RELATIVE REPRESENTATION
* INADEQUATE DESCRIPTION

SEC. 18

W.M. Conley 5

W.M. Conley 5

W.M. Conley 5

W.M. Conley 5

W.M. Conley 5

W.M. Conley 5

W.M. Conley 5

W.M. Conley 5

W.M. Conley 5

W.M. Conley 5

JANUARY 1, 1994

A	B	C	D
E	F	G	H
I	J	K	L
M	N	O	P

MONTVILLE TWP

RELATIVE REPRESENTATION
* INADEQUATE DESCRIPTION

SEC. 18

W.M. Conley 5

W.M. Conley 5

W.M. Conley 5

W.M. Conley 5

W.M. Conley 5

W.M. Conley 5

W.M. Conley 5

W.M. Conley 5

W.M. Conley 5

W.M. Conley 5

JANUARY 1, 1994

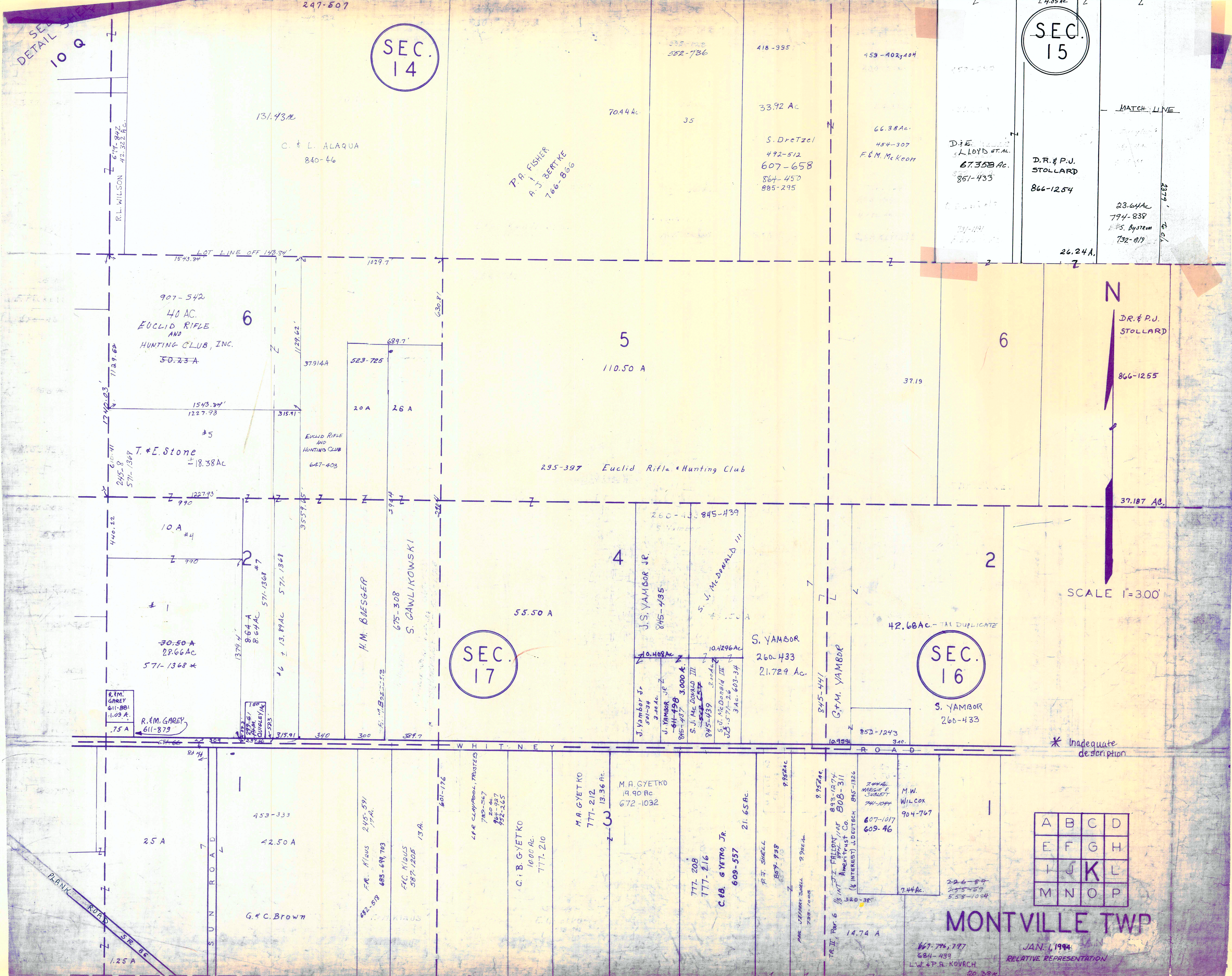
A	B	C	D
E	F	G	H
I			

SEC. 10 Q
DETAIL

247-507

SEC. 14

SEC. 15



PARK ROAD
SR 85

SUN ROAD

W H I T N E Y R O A D

A	B	C	D
E	F	G	H
I	J	K	L
M	N	O	P

MONTVILLE TWP

JAN. 1, 1994
RELATIVE REPRESENTATION

* Inadequate description

SCALE 1"=300'

DR. & P.J. STOLLARD

866-1255

37.187 AC.

D.R. & P.J. STOLLARD
866-1254

23.64 AC
794-838
S. Bystram
732-819

26.24 A.

D.E. LLOYD ET AL.
67.358 AC.
851-433

66.38 AC.
454-307
F. & M. McKeon

S. Dretzel
492-512
607-658
864-450
885-295

552-736

P.A. FISHER
A.J. BERTKE
766-866

C. & L. ALAQUA
840-46

131.73 AC

SEC. 16

SEC. 17

6

5

6

4

2

6

907-542
40 AC.
EUCLID RIFLE
AND
HUNTING CLUB, INC.
50.23 A

110.50 A

T. & E. Stone
18.38 AC

295-397 Euclid Rifle & Hunting Club

10 A #4

30.50 A
28.66 AC
571-1368 *

55.50 A

42.68 AC - TAL DUPLICATE

S. YAMBOR
266-433

S. YAMBOR
260-433
21.729 AC.

J.S. YAMBOR JR.
845-435

S. V. Mc DONALD III

H.M. BUESGER

S. GAWLIKOWSKI

G.M. YAMBOR

R.M. GAREY
611-881
1.09 A.

R.M. GAREY
611-879

R.G. HALL
571-1368 #7

H.M. BUESGER

J. YAMBOR JR.
541-34

J. YAMBOR JR.
3.00 AC.

S. J. Mc DONALD III
3.00 AC.

S. J. Mc DONALD III
3.00 AC.

S. J. Mc DONALD III
3.00 AC.

S. J. Mc DONALD III
3.00 AC.

S. J. Mc DONALD III
3.00 AC.

S. J. Mc DONALD III
3.00 AC.

S. J. Mc DONALD III
3.00 AC.

S. J. Mc DONALD III
3.00 AC.

S. J. Mc DONALD III
3.00 AC.

S. J. Mc DONALD III
3.00 AC.

S. J. Mc DONALD III
3.00 AC.

S. J. Mc DONALD III
3.00 AC.

S. J. Mc DONALD III
3.00 AC.

S. J. Mc DONALD III
3.00 AC.

S. J. Mc DONALD III
3.00 AC.

S. J. Mc DONALD III
3.00 AC.

S. J. Mc DONALD III
3.00 AC.

S. J. Mc DONALD III
3.00 AC.

S. J. Mc DONALD III
3.00 AC.

S. J. Mc DONALD III
3.00 AC.

S. J. Mc DONALD III
3.00 AC.

S. J. Mc DONALD III
3.00 AC.

S. J. Mc DONALD III
3.00 AC.

S. J. Mc DONALD III
3.00 AC.

S. J. Mc DONALD III
3.00 AC.

S. J. Mc DONALD III
3.00 AC.

S. J. Mc DONALD III
3.00 AC.

S. J. Mc DONALD III
3.00 AC.

S. J. Mc DONALD III
3.00 AC.

S. J. Mc DONALD III
3.00 AC.

S. J. Mc DONALD III
3.00 AC.

S. J. Mc DONALD III
3.00 AC.

S. J. Mc DONALD III
3.00 AC.

S. J. Mc DONALD III
3.00 AC.

S. J. Mc DONALD III
3.00 AC.

S. J. Mc DONALD III
3.00 AC.

S. J. Mc DONALD III
3.00 AC.

S. J. Mc DONALD III
3.00 AC.

S. J. Mc DONALD III
3.00 AC.

S. J. Mc DONALD III
3.00 AC.

S. J. Mc DONALD III
3.00 AC.

S. J. Mc DONALD III
3.00 AC.

S. J. Mc DONALD III
3.00 AC.

S. J. Mc DONALD III
3.00 AC.

S. J. Mc DONALD III
3.00 AC.

S. J. Mc DONALD III
3.00 AC.

S. J. Mc DONALD III
3.00 AC.

S. J. Mc DONALD III
3.00 AC.

S. J. Mc DONALD III
3.00 AC.

S. J. Mc DONALD III
3.00 AC.

S. J. Mc DONALD III
3.00 AC.

S. J. Mc DONALD III
3.00 AC.

S. J. Mc DONALD III
3.00 AC.

S. J. Mc DONALD III
3.00 AC.

S. J. Mc DONALD III
3.00 AC.

S. J. Mc DONALD III
3.00 AC.

S. J. Mc DONALD III
3.00 AC.

S. J. Mc DONALD III
3.00 AC.

S. J. Mc DONALD III
3.00 AC.

S. J. Mc DONALD III
3.00 AC.

S. J. Mc DONALD III
3.00 AC.

S. J. Mc DONALD III
3.00 AC.

S. J. Mc DONALD III
3.00 AC.

S. J. Mc DONALD III
3.00 AC.

S. J. Mc DONALD III
3.00 AC.

S. J. Mc DONALD III
3.00 AC.

S. J. Mc DONALD III
3.00 AC.

S. J. Mc DONALD III
3.00 AC.

S. J. Mc DONALD III
3.00 AC.

S. J. Mc DONALD III
3.00 AC.

S. J. Mc DONALD III
3.00 AC.

S. J. Mc DONALD III
3.00 AC.

S. J. Mc DONALD III
3.00 AC.

S. J. Mc DONALD III
3.00 AC.

S. J. Mc DONALD III
3.00 AC.

S. J. Mc DONALD III
3.00 AC.

S. J. Mc DONALD III
3.00 AC.

S. J. Mc DONALD III
3.00 AC.

S. J. Mc DONALD III
3.00 AC.

S. J. Mc DONALD III
3.00 AC.

S. J. Mc DONALD III
3.00 AC.

S. J. Mc DONALD III
3.00 AC.

S. J. Mc DONALD III
3.00 AC.

S. J. Mc DONALD III
3.00 AC.

S. J. Mc DONALD III
3.00 AC.

S. J. Mc DONALD III
3.00 AC.

S. J. Mc DONALD III
3.00 AC.

S. J. Mc DONALD III
3.00 AC.

S. J. Mc DONALD III
3.00 AC.

S. J. Mc DONALD III
3.00 AC.

S. J. Mc DONALD III
3.00 AC.

S. J. Mc DONALD III
3.00 AC.

S. J. Mc DONALD III
3.00 AC.

S. J. Mc DONALD III
3.00 AC.

S. J. Mc DONALD III
3.00 AC.

S. J. Mc DONALD III
3.00 AC.

S. J. Mc DONALD III
3.00 AC.

S. J. Mc DONALD III
3.00 AC.

S. J. Mc DONALD III
3.00 AC.

S. J. Mc DONALD III
3.00 AC.

S. J. Mc DONALD III
3.00 AC.

S. J. Mc DONALD III
3.00 AC.

S. J. Mc DONALD III
3.00 AC.

S. J. Mc DONALD III
3.00 AC.

S. J. Mc DONALD III
3.00 AC.

S. J. Mc DONALD III
3.00 AC.

S. J. Mc DONALD III
3.00 AC.

S. J. Mc DONALD III
3.00 AC.

S. J. Mc DONALD III
3.00 AC.

S. J. Mc DONALD III
3.00 AC.

S. J. Mc DONALD III
3.00 AC.

S. J. Mc DONALD III
3.00 AC.

S. J. Mc DONALD III
3.00 AC.

S. J. Mc DONALD III
3.00 AC.

S. J. Mc DONALD III
3.00 AC.

S. J. Mc DONALD III
3.00 AC.

S. J. Mc DONALD III
3.00 AC.

S. J. Mc DONALD III
3.00 AC.

S. J. Mc DONALD III
3.00 AC.

S. J. Mc DONALD III
3.00 AC.

S. J. Mc DONALD III
3.00 AC.

S. J. Mc DONALD III
3.00 AC.

S. J. Mc DONALD III
3.00 AC.

S. J. Mc DONALD III
3.00 AC.

S. J. Mc DONALD III
3.00 AC.

S. J. Mc DONALD III
3.00 AC.

S. J. Mc DONALD III
3.00 AC.

S. J. Mc DONALD III
3.00 AC.

S. J. Mc DONALD III
3.00 AC.

S. J. Mc DONALD III
3.00 AC.

S. J. Mc DONALD III
3.00 AC.

S. J. Mc DONALD III
3.00 AC.

S. J. Mc DONALD III
3.00 AC.

S. J. Mc DONALD III
3.00 AC.

S. J. Mc DONALD III
3.00 AC.

S. J. Mc DONALD III
3.00 AC.

S. J. Mc DONALD III
3.00 AC.

S. J. Mc DONALD III
3.00 AC.

S. J. Mc DONALD III
3.00 AC.

S. J. Mc DONALD III
3.00 AC.

S. J. Mc DONALD III
3.00 AC.

S. J. Mc DONALD III
3.00 AC.

S. J. Mc DONALD III
3.00 AC.

S. J. Mc DONALD III
3.00 AC.

S. J. Mc DONALD III
3.00 AC.

S. J. Mc DONALD III
3.00 AC.

S. J. Mc DONALD III
3.00 AC.

S. J. Mc DONALD III
3.00 AC.

S. J. Mc DONALD III
3.00 AC.

S. J. Mc DONALD III
3.00 AC.

S. J. Mc DONALD III
3.00 AC.

S. J. Mc DONALD III
3.00 AC.

S. J. Mc DONALD III
3.00 AC.

S. J. Mc DONALD III
3.00 AC.

S. J. Mc DONALD III
3.00 AC.

S. J. Mc DONALD III
3.00 AC.

S. J. Mc DONALD III
3.00 AC.

S. J. Mc DONALD III
3.00 AC.

S. J. Mc DONALD III
3.00 AC.

S. J. Mc DONALD III
3.00 AC.

S. J. Mc DONALD III
3.00 AC.

S. J. Mc DONALD III
3.00 AC.

S. J. Mc DONALD III
3.00 AC.

S. J. Mc DONALD III
3.00 AC.

S. J. Mc DONALD III
3.00 AC.

S. J. Mc DONALD III
3.00 AC.

S. J. Mc DONALD III
3.00 AC.

S. J. Mc DONALD III
3.00 AC.

S. J. Mc DONALD III
3.00 AC.

S. J. Mc DONALD III
3.00 AC.

S. J. Mc DONALD III
3.00 AC.

S. J. Mc DONALD III
3.00 AC.

S. J. Mc DONALD III
3.00 AC.

S. J. Mc DONALD III
3.00 AC.

S. J. Mc DONALD III
3.00 AC.

S. J. Mc DONALD III
3.00 AC.

S. J. Mc DONALD III
3.00 AC.

S. J. Mc DONALD III
3.00 AC.

S. J. Mc DONALD III
3.00 AC.

S. J. Mc DONALD III
3.00 AC.

S. J. Mc DONALD III
3.00 AC.

S. J. Mc DONALD III
3.00 AC.

S. J. Mc DONALD III
3.00 AC.

S. J. Mc DONALD III
3.00 AC.

S. J. Mc DONALD III
3.00 AC.

S. J. Mc DONALD III
3.00 AC.

S. J. Mc DONALD III
3.00 AC.

S. J. Mc DONALD III
3.00 AC.

S. J. Mc DONALD III
3.00 AC.

S. J. Mc DONALD III
3.00 AC.

S. J. Mc DONALD III
3.00 AC.

J. POWELL
915-466
4051

794-838
425-55

SEC.
15

312-457-8
637-959

MATCH ZLINE
26.24Ac

D. R. & P. J.
STOLLARD
866-1254

S. BYSTRON
23.64Ac

61.76 A

12 A

50 A

24.71 A

399-1012
891-623
891-625

P. Berardinelli
&
C. BERARDINELLI

W. MAUSLING

367-417
392-543

6

5

32 A

39.16 A

18 A

50 A

S. Zadnik

2

J. P., Jr. & B. E. CONROY
807-380

12.49 Ac.

574-190

308-294, 296 B. Molder
480-544

985

C. B. & E. F. BENNETT, JR.
924-331

25 A

1782.29'

C. L. & T. L. SHEPP
957-615

174c

A. P. & M. L. TONTI
964-1099
965-1006
34 Ac.

889.54'

4

1574.47'

82.50A

48.5Ac

265-431

D. McElroy

SEC.
16

WHITNEY ROAD

K. A. J. Z. & M. J.
DOMINIAK
761-253

3.386A

D. M. WALLS
854-455

A. F. & C. M. LIPSEY
875-690

6.89 Ac.

J. ZRONEK
673-613
70 Ac.

791-893
J. & M. Daugherty
6887 Ac

3

186-464
225-372
568-1205
568-353
696-715

744-522
C. J. & E. L.
KONVA
11.5 Ac.

46.00 A

47.714 Ac.

A. ZRONEK- 653-116
36.72 Ac.

J. H. SZANICH
696-715

A
S
H
T
A
B
U
L
A
C
O
U
N
T
Y



* Inadequate description

SCALE 1"=300'

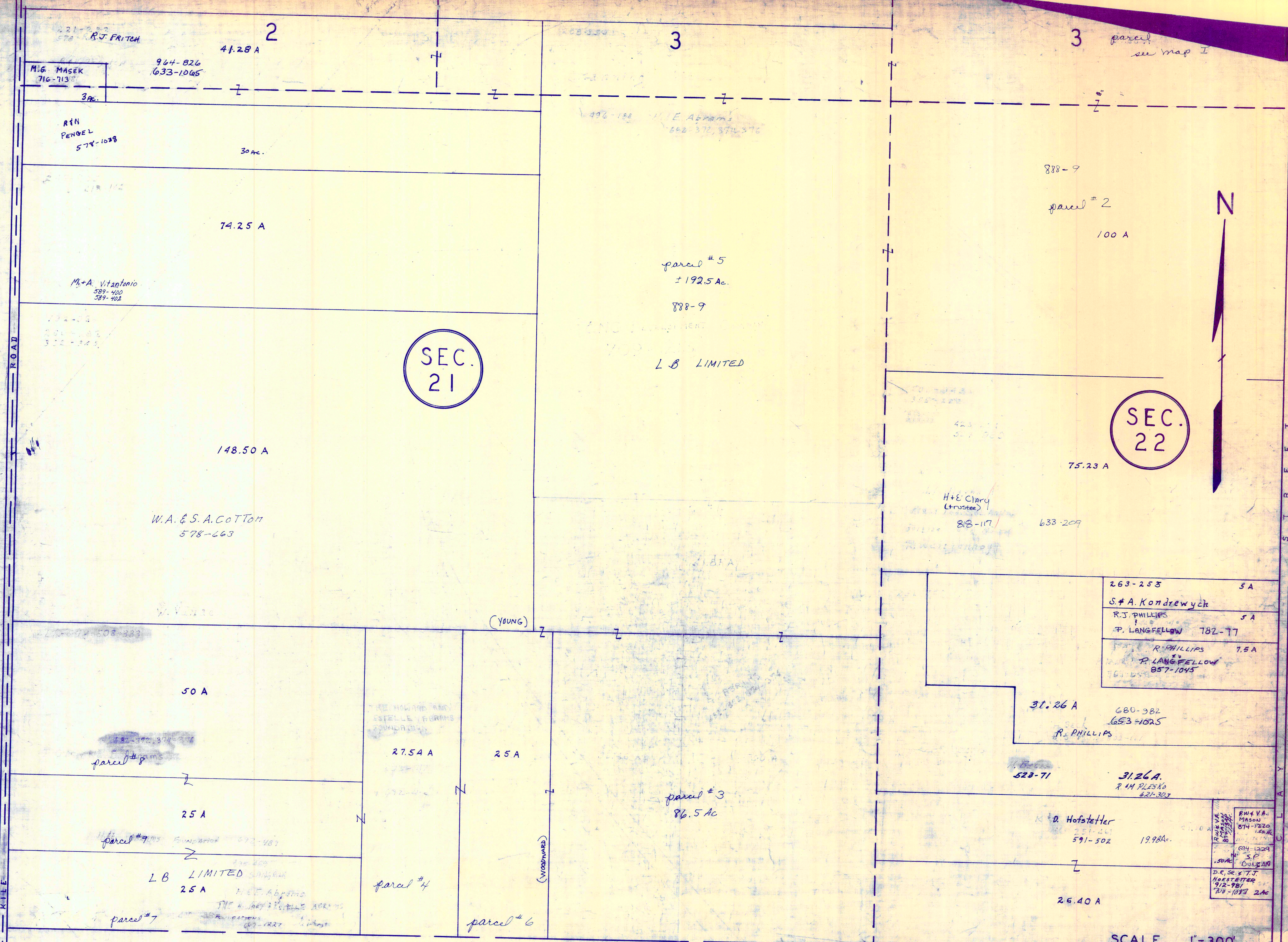
JAN 1 1994

A	B	C	D
E	F	G	H
I	J	K	L
M	N	O	P

RELATIVE REPRESENTATION

MONTVILLE TWP.

H A M B D E N T O W N S H I P



SEC. 21

SEC. 22



H U N T S B U R G T O W N S H I P

SCALE 1"=300'

JAN. 1, 1994
RELATIVE REPRESENTATION

A	B	C	D
E	F	G	H
I	J	K	L
M	N	O	P

MONTVILLE TWP

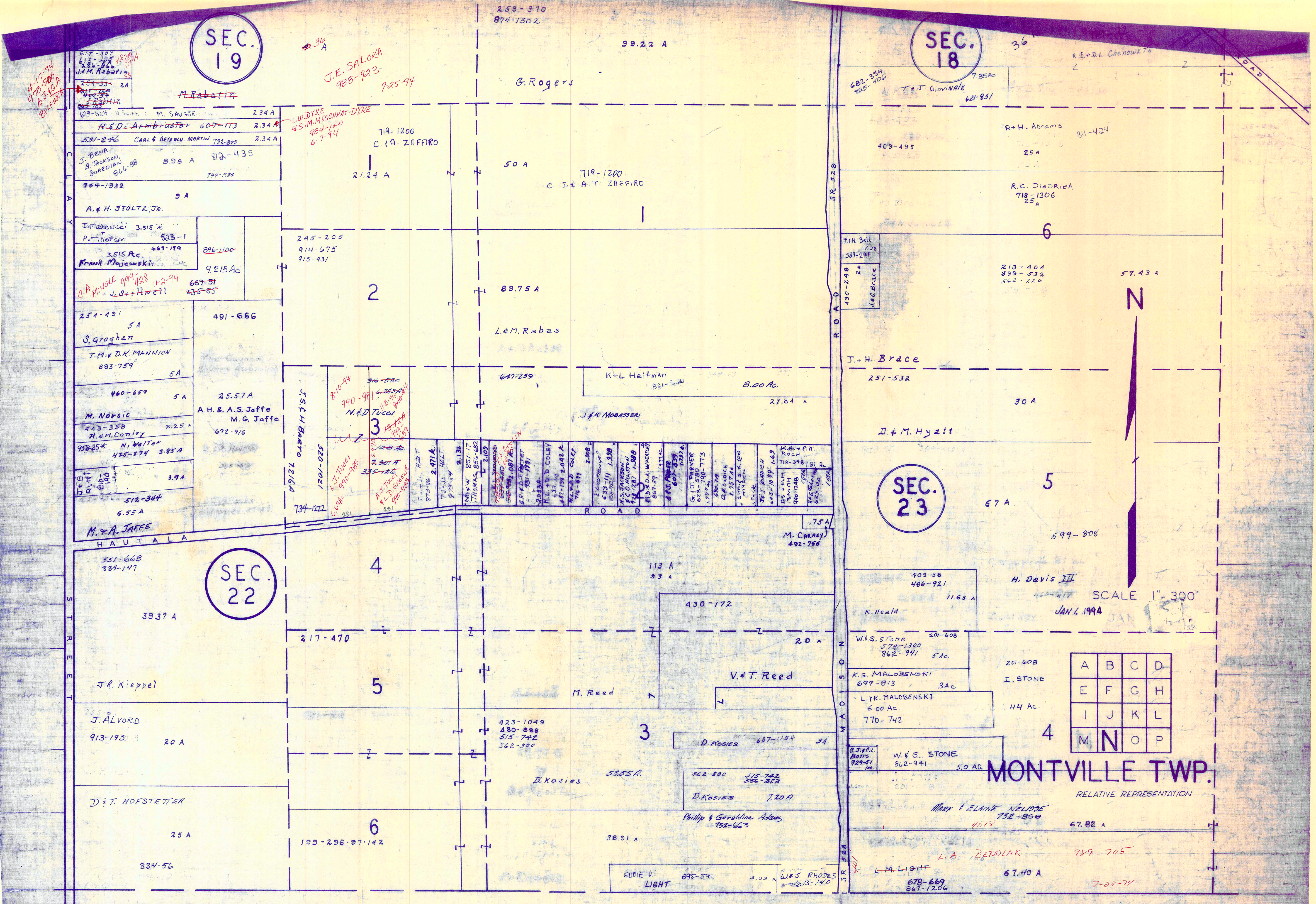
* Inadequate description

SEC. 19

SEC. 18

SEC. 23

SEC. 22



H U N T S B U R G T O W N S H I P * Inadequate description

MONTVILLE TWP.

RELATIVE REPRESENTATION

MARK & ELAINE NELB

752-850

67.82 A

L.A. BENDLAK

989-705

7-29-94

67.40 A

L.M. LIGHT

678-669

867-1206

5.03 A

W.S. RHODES

1613-140

5.03 A

EDIE R. LIGHT

695-541

5.03 A

PHILIP & GERATHINE ADAMS

755-663

7.20 A

D. KOSIES

562-800

515-742

556-283

3.4

D. KOSIES

687-1154

3.4

M. REED

113 A

33 A

430-172

20 A

V. & T. REED

20 A

409-38

486-921

11.63 A

K. HEALD

201-608

5.00 AC.

W.S. STONE

574-1300

862-941

5.00 AC.

201-608

5.00 AC.

K.S. MALOBENSKI

699-813

3.00 AC.

I. STONE

201-608

44 AC.

L.F.K. MALOBENSKI

6.00 AC.

770-742

4

W. & S. STONE

862-941

5.00 AC.

201-608

5.00 AC.

W. & S. STONE

574-1300

862-941

5.00 AC.

201-608

5.00 AC.

K.S. MALOBENSKI

699-813

3.00 AC.

I. STONE

201-608

44 AC.

L.F.K. MALOBENSKI

6.00 AC.

770-742

4

W. & S. STONE

862-941

5.00 AC.

201-608

5.00 AC.

W. & S. STONE

574-1300

862-941

5.00 AC.

201-608

5.00 AC.

K.S. MALOBENSKI

699-813

3.00 AC.

I. STONE

201-608

44 AC.

L.F.K. MALOBENSKI

6.00 AC.

770-742

4

W. & S. STONE

862-941

5.00 AC.

201-608

5.00 AC.

W. & S. STONE

574-1300

862-941

5.00 AC.

201-608

5.00 AC.

K.S. MALOBENSKI

699-813

3.00 AC.

I. STONE

201-608

44 AC.

L.F.K. MALOBENSKI

6.00 AC.

770-742

4

W. & S. STONE

862-941

5.00 AC.

201-608

5.00 AC.

W. & S. STONE

574-1300

862-941

5.00 AC.

201-608

5.00 AC.

K.S. MALOBENSKI

699-813

3.00 AC.

I. STONE

201-608

44 AC.

L.F.K. MALOBENSKI

6.00 AC.

770-742

4

W. & S. STONE

862-941

5.00 AC.

201-608

5.00 AC.

W. & S. STONE

574-1300

862-941

5.00 AC.

201-608

5.00 AC.

K.S. MALOBENSKI

699-813

3.00 AC.

I. STONE

201-608

44 AC.

L.F.K. MALOBENSKI

6.00 AC.

770-742

4

W. & S. STONE

862-941

5.00 AC.

201-608

5.00 AC.

W. & S. STONE

574-1300

862-941

5.00 AC.

201-608

5.00 AC.

K.S. MALOBENSKI

699-813

3.00 AC.

I. STONE

201-608

44 AC.

L.F.K. MALOBENSKI

6.00 AC.

770-742

4

W. & S. STONE

862-941

5.00 AC.

201-608

5.00 AC.

W. & S. STONE

574-1300

862-941

5.00 AC.

201-608

5.00 AC.

K.S. MALOBENSKI

699-813

3.00 AC.

I. STONE

201-608

44 AC.

L.F.K. MALOBENSKI

6.00 AC.

770-742

4

W. & S. STONE

862-941

5.00 AC.

201-608

5.00 AC.

W. & S. STONE

574-1300

862-941

5.00 AC.

201-608

5.00 AC.

K.S. MALOBENSKI

699-813

3.00 AC.

I. STONE

201-608

44 AC.

L.F.K. MALOBENSKI

6.00 AC.

770-742

4

W. & S. STONE

862-941

5.00 AC.

201-608

5.00 AC.

W. & S. STONE

574-1300

862-941

5.00 AC.

201-608

5.00 AC.

K.S. MALOBENSKI

699-813

3.00 AC.

I. STONE

201-608

44 AC.

L.F.K. MALOBENSKI

6.00 AC.

770-742

4

W. & S. STONE

862-941

5.00 AC.

201-608

5.00 AC.

W. & S. STONE

574-1300

862-941

5.00 AC.

201-608

5.00 AC.

K.S. MALOBENSKI

699-813

3.00 AC.

I. STONE

201-608

44 AC.

L.F.K. MALOBENSKI

6.00 AC.

770-742

4

W. & S. STONE

862-941

5.00 AC.

201-608

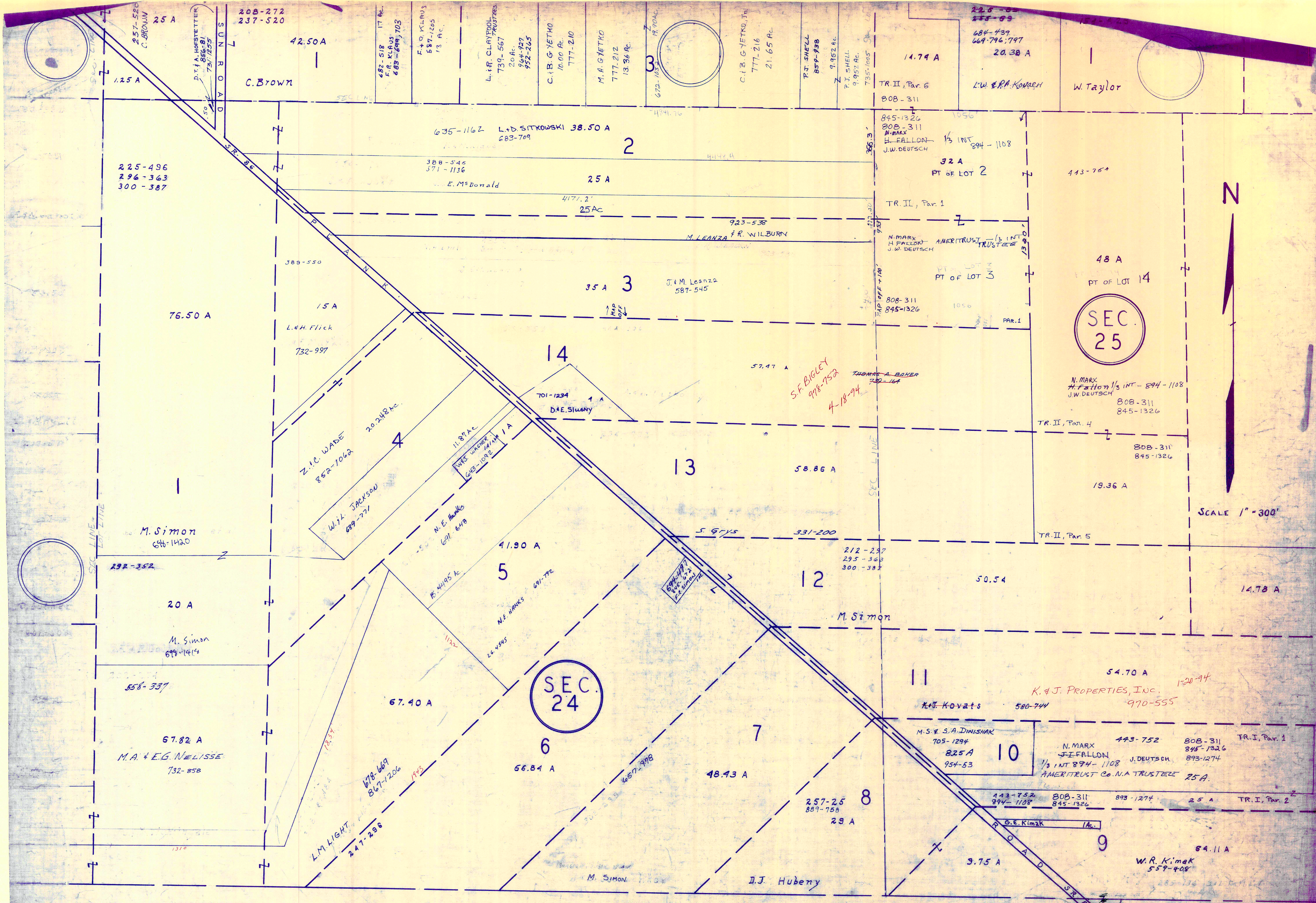
5.00 AC.

W. & S. STONE

574-1300

862-941

5.00 AC



H U N T S B U R G T O W N S H I P

JAN 1, 1994
SCALE 1" = 300'

A	B	C	D
E	F	G	H
I	J	K	L
M	N	O	P

* Inadequate description

RELATIVE REPRESENTATION

854-455

D.M. WALLS

430-387

653-116

A.ZRONEK

W.E.M. Taylor

3

696-719

46.00 AC.

H.J. STANICH

733-604

11.9 AC.

714-522

10/11/14

14

48 A

64.38 A

443-754

68.08 A

68.56 A

15

893-1274
845-1326
808-311

TR. II, Par. 4

7

TR. II, Par. 5

19.36 A

893-1274
845-1326
808-311

TR. II, Par. 3

SEC.
25

893-1274
845-1326
808-311

845-1326
808-311
893-1274

16

TR. II, Par. 2

J.I. Fallon
N. MARX

J.W. DEUTSCH

17

559-408
W.R. KIMAK

12

14.78 A
W.R. KIMAK
559-408

434-678

11

54.70 A

F. Kovats

25 Ac.

TR. I, Par. 1
808-311
845-1326
893-1274
1/3 INT 894-1108

10

TRUSTEE - 1/3 894-1108 AMERITRUST Co. MA.

W.R. Kimak
559-408

64.11 A 9

19

30.40 A
W.R. KIMAK
559-408

45.60 A

18

J.I. FALLON
N. MARX
J.W. DEUTSCH

TR. III
808-311
845-1326
893-1274

619-774

A S H T A B U L A C O U N T Y

H U N T S B U R G T W P.

N



SCALE 1" = 300'

JAN 6, 1944

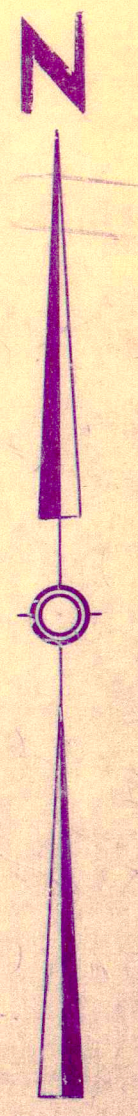
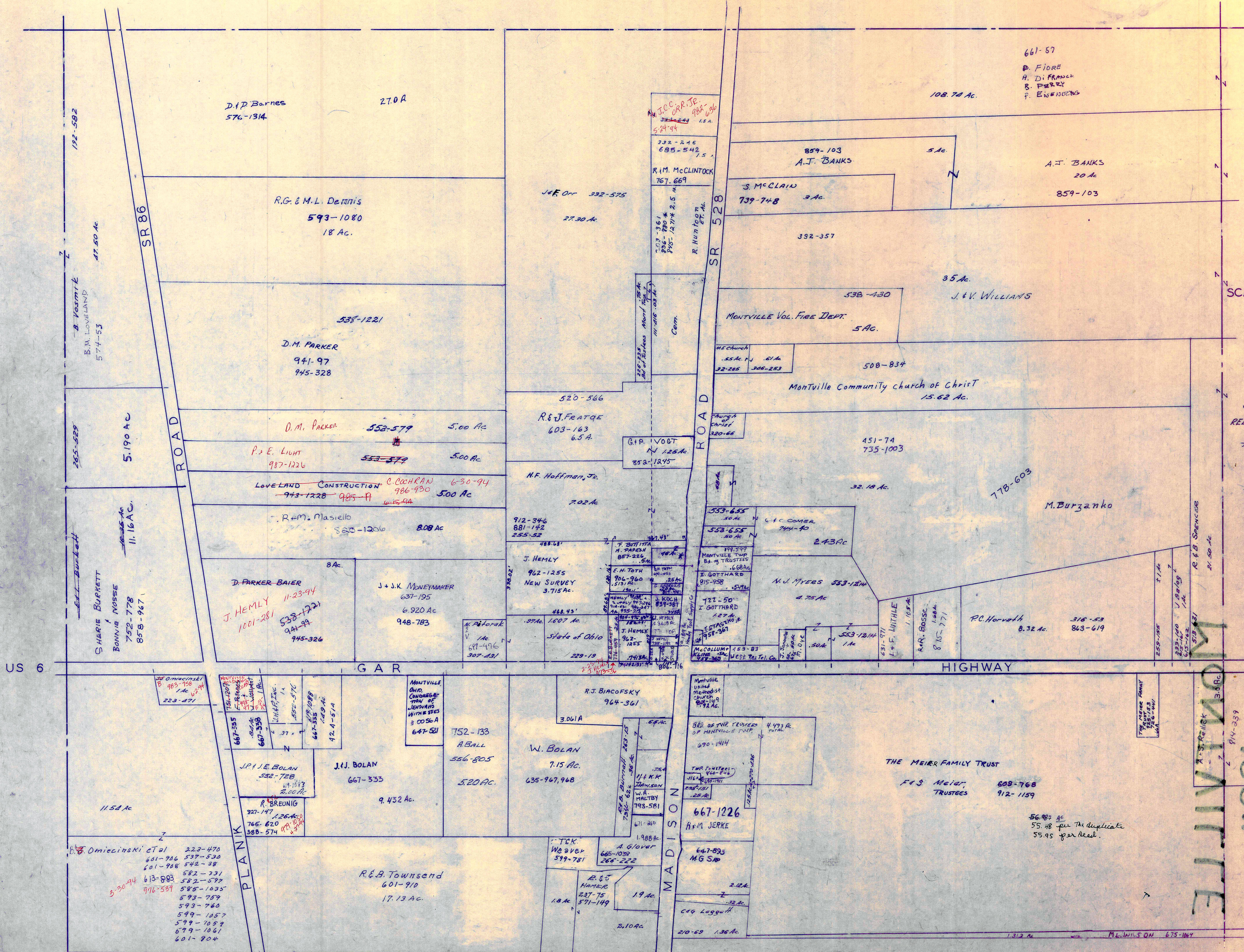
RELATIVE REPRESENTATION

* Inadequate description

A	B	C	D
E	F	G	H
I	J	K	L
M	N	O	P

MONTVILLE TWP

MONTVILLE TWP SECTION 13



SCALE 1" = 200'

JANUARY 1, 1994
RELATIVE REPRESENTATION
* HOFFMAN ET AL.
816-150
• 5.5 AC
• 4.0 AC
• 4.4 AC
• 3.9 AC

MONTVILLE

* Inadequate description